

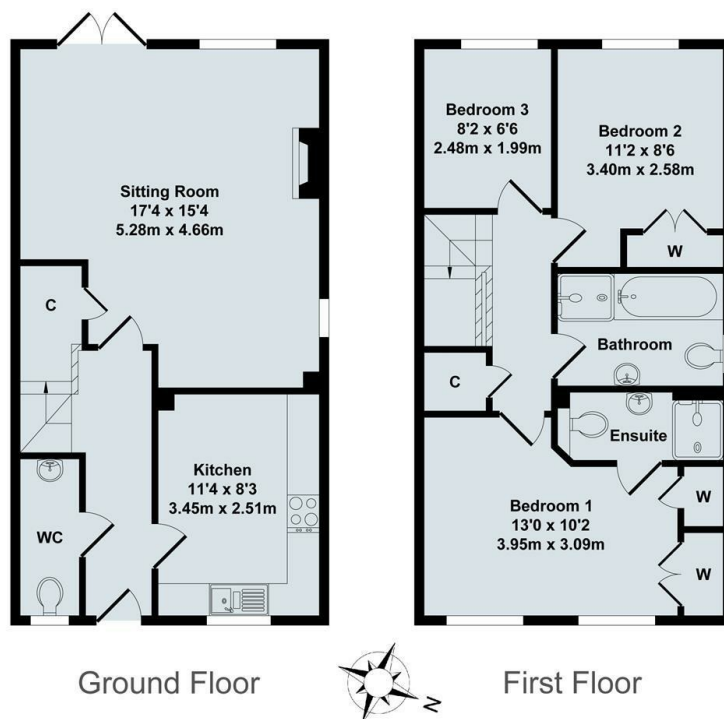


## 14 Plater Drive, Oxford, OX2 6QT

£2,350 PCM - 13th July 2024.

- Three bedrooms
- Cloakroom
- NO HMO LICENCE
- Mains gas, electricity and water
- Two Bathrooms
- Allocated parking for 1 car
- EPC Band D
- Unfurnished
- Kitchen appliances
- Council Tax Band E





Total Approx. Floor Area 886 Sq.Ft. (82.30 Sq.M.)  
All items illustrated on this plan are included in the "Total Approx Floor Area"

## Directions

## Viewings

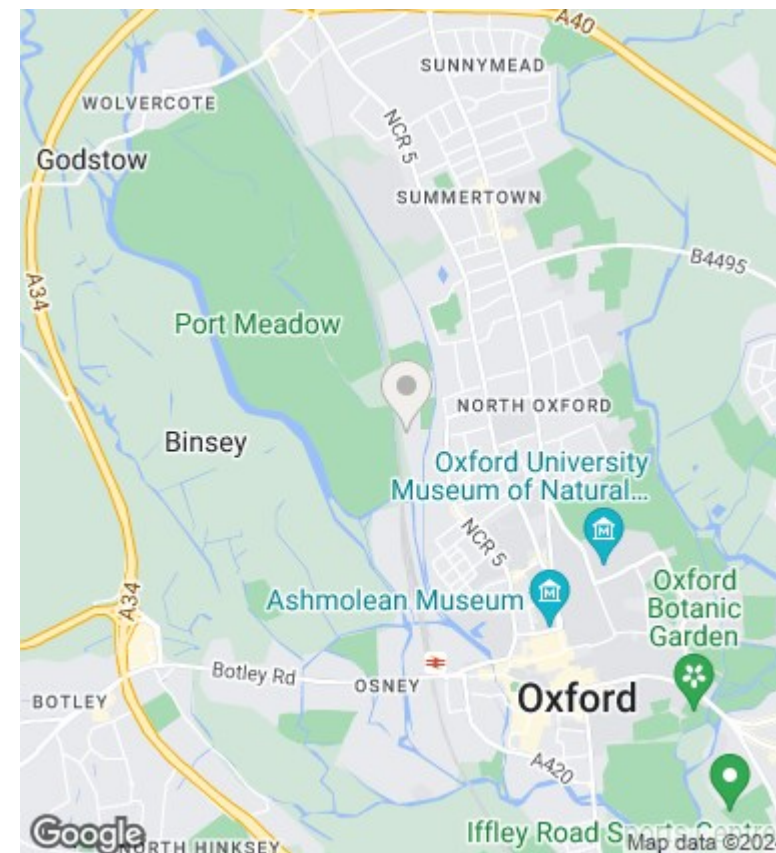
Viewings by arrangement only. Call 01865 515900 to make an appointment.

## Council Tax Band

E

## EPC Rating:

D



Energy Efficiency Rating		
	Current	Potential
Very energy efficient - lower running costs		
(92 plus) <b>A</b>		
(81-91) <b>B</b>		<b>81</b>
(69-80) <b>C</b>		
(55-68) <b>D</b>	<b>60</b>	
(39-54) <b>E</b>		
(21-38) <b>F</b>		
(1-20) <b>G</b>		
Not energy efficient - higher running costs		
<b>England &amp; Wales</b>	EU Directive 2002/91/EC	